

National Health Workforce Strategic Forum

Mr David Kalisch

Health Workforce Principal Committee

Setting the Scene

- Productivity Commission Research
- SOM / COAG
- AHMAC Review of Committees

COAG Decisions

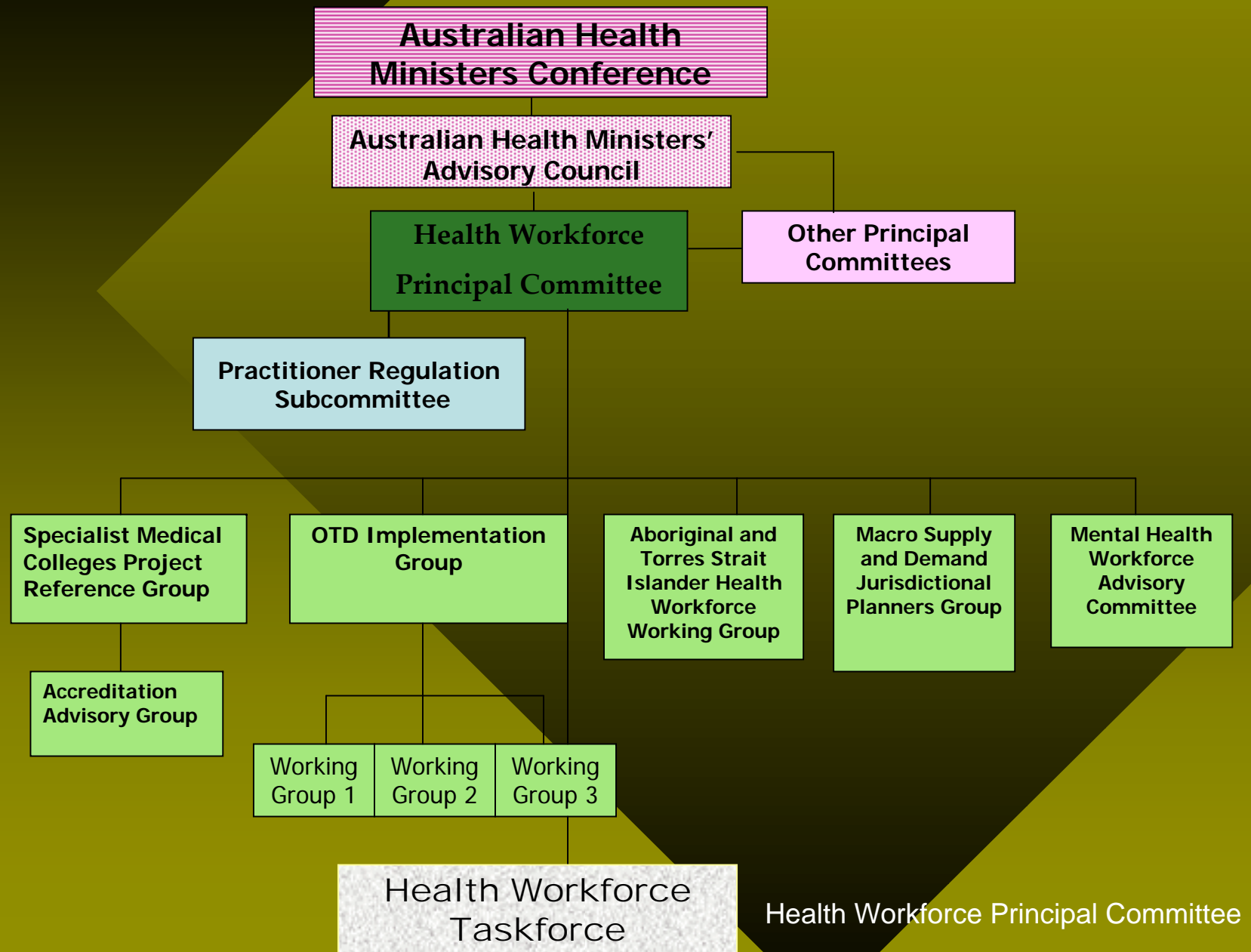
- Additional Higher Education training places and clinical training support
- AHMC / MCEETYA - Annual agreement on education priorities
- National Registration/Accreditation
- Expanded Training settings
- National assessment process for OTDs
- Taskforce on Innovation & Reform

AHMAC Review of Committees

- Committee structures evolved over time
AMWAC, AHWAC, AHWOC
- Six Principal Committees to advise on priority issues
 - Health Workforce
 - Clinical Technical and Ethical
 - Australian Health Protection
 - National Health Information Management
 - Health Policy Priorities
 - Australian Population Health Development
- Strengthened governance arrangements & business rules
- Short term - specific purpose subcommittees

Health Workforce Principal Committee

Workforce Committee Structure



Health Workforce Principal Committee

- Whole of workforce
- Interprofessional & multidisciplinary perspective
- Better engagement with key stakeholders
- Renewed focus on NHWSF
- Specialist/technical input

HWPC Strategic Principles

1. Health workforce reform will advance the 7 Principles of the National Health Workforce Strategic Framework
2. Health system change will be supported will be supported through increased focussed on 'primary care'
3. Health aspects of the CoAG agreed human capital reforms related to health, in particular in relation to risk factors and preventable chronic disease in school age children and the working population will be supported.
4. Chronic disease priorities will be in accordance with the agreed health priority areas.
5. Maintenance of hospital based health care will be supported through increased flexibility in the utilisation of the health workforce

Health Workforce Taskforce

- Action COAG requirements
- Established within existing structures
- Develop strategies to meet NHWSF
- Ensure efficiency in AHMAC investment

Health Workforce Taskforce

- Primary vehicle for driving reform
- Established for four years
- Led by Executive Director
- Subsume current functions of NHWS



Health Workforce Principal Committee

Work Program

Contribute to implementing COAG agreed reforms

Initial Focus

- National Workforce Data Framework
- Workforce Projections & Modelling
- National workforce reform projects
- Clinical Training

Industry Engagement

- Expert reference groups
- Annual national forum
- Specific forums/workshops
- Looking to stakeholders
- Evaluating impacts
- Outcome focussed

National Health Workforce Strategic Forum

May 2007

Health Workforce Principal Committee