



**MENTAL HEALTH  
WORKFORCE**  
ADVISORY COMMITTEE

# **Mental Health in Pre-registration Nursing Courses**



# An ongoing area of interest

- Australian Health Workforce Advisory Committee Report (2003)
- Mental Health Nurse Education Taskforce (MHNET) (2005- 2008)
- Grants from the Commonwealth for curriculum review and development of mental health majors (2008/09)
- ANMC Accreditation Standards: Registered Nurses (2009)
- MHNET Implementation Group (2009)



**MENTAL HEALTH  
WORKFORCE**  
ADVISORY COMMITTEE

# Context

- Mental disorders and mental illness are common
- Mainstreaming has been a major policy shift
- All nurses need knowledge and skills in recognising, understanding and assisting those with mental illness



# CDNM involvement

- Representation on MHNET and the MHNET Implementation Group
- The Chair, CDNM advised in mid-2007 that he would encourage members to incorporate the report's recommendations into their pre-registration nursing courses.
- The Council supported distribution of a survey to Schools of Nursing and Midwifery to assess uptake of MHNET's recommendations.
- Council has also recently reiterated its support



**MENTAL HEALTH  
WORKFORCE**  
ADVISORY COMMITTEE

Framework element	Example
<b>Core values</b> underpinning the learning and teaching of mental health nursing theory and practice	Eg. Value 4: A comprehensive Mental Health assessment is an essential foundation for treatment and recovery
<b>Learning outcomes</b> of mental health nursing content in pre-registration nursing curricula	Eg. LO# Be competent in establishing professional therapeutic relationships with people with mental health issues and their carers.
<b>Principles for learning and teaching mental health nursing</b> in pre-registration nursing curricula	Principle 1: Theory & clinical practice is taught at all times by people with specialist skills, knowledge, experience and qualifications in Mental Health
<b>Benchmarks</b> for inclusion of mental health nursing content in pre-registration nursing curricula	BM 1: Nationally consistent core values, LOs, and principles for learning & teaching are adopted for curricula accreditation standards.



# Where have we got to?

- Survey closed in February 2010 and had a response rate of 86%
- Over half (58%) of pre-registration nursing courses reported substantial review of mental health in the curriculum in the last 2-3 years
- Three-quarters of respondents stated that their curriculum was clearly based either entirely or partly on the Framework for Mental Health in Pre-registration Nursing Curricula in the MHNET Report



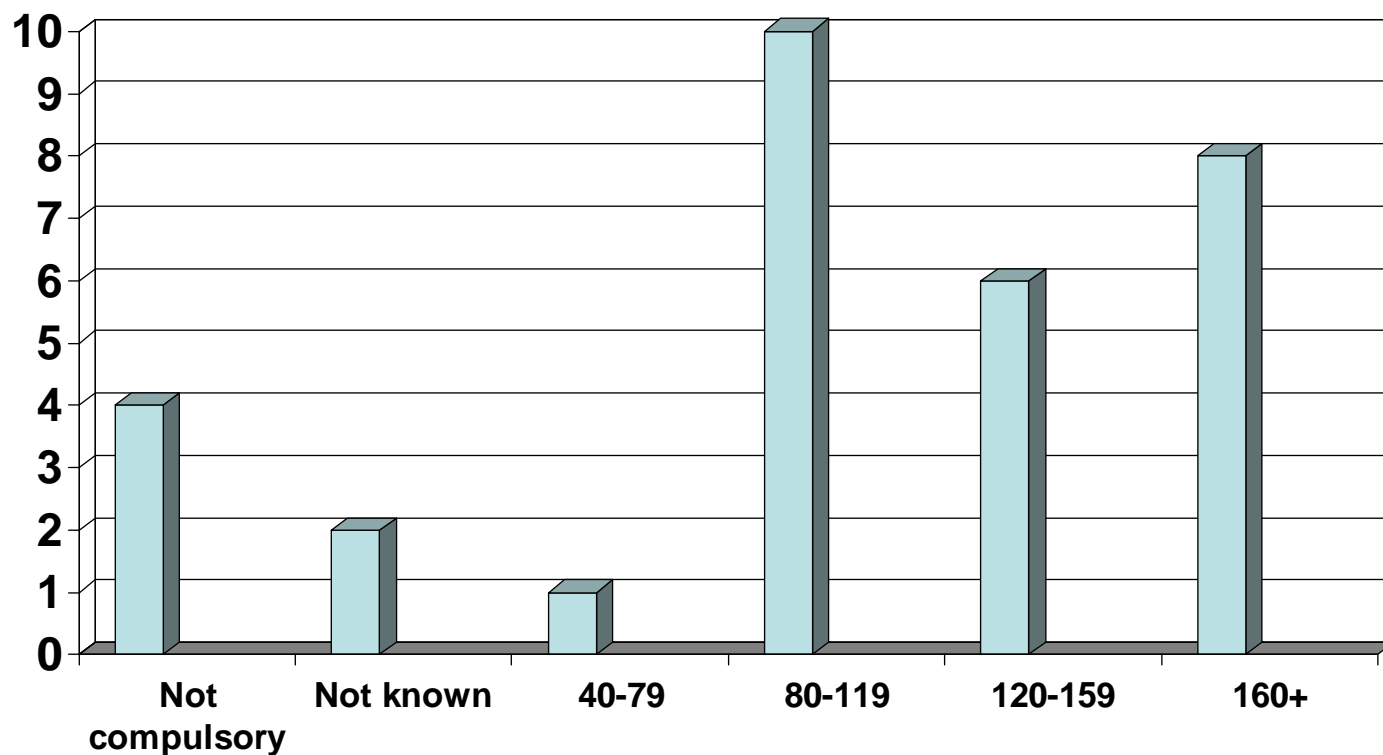
# Areas for further work

- Clinical placements
- Mental health curricula content
- Mental health qualifications and experience of teaching staff



# Clinical placements

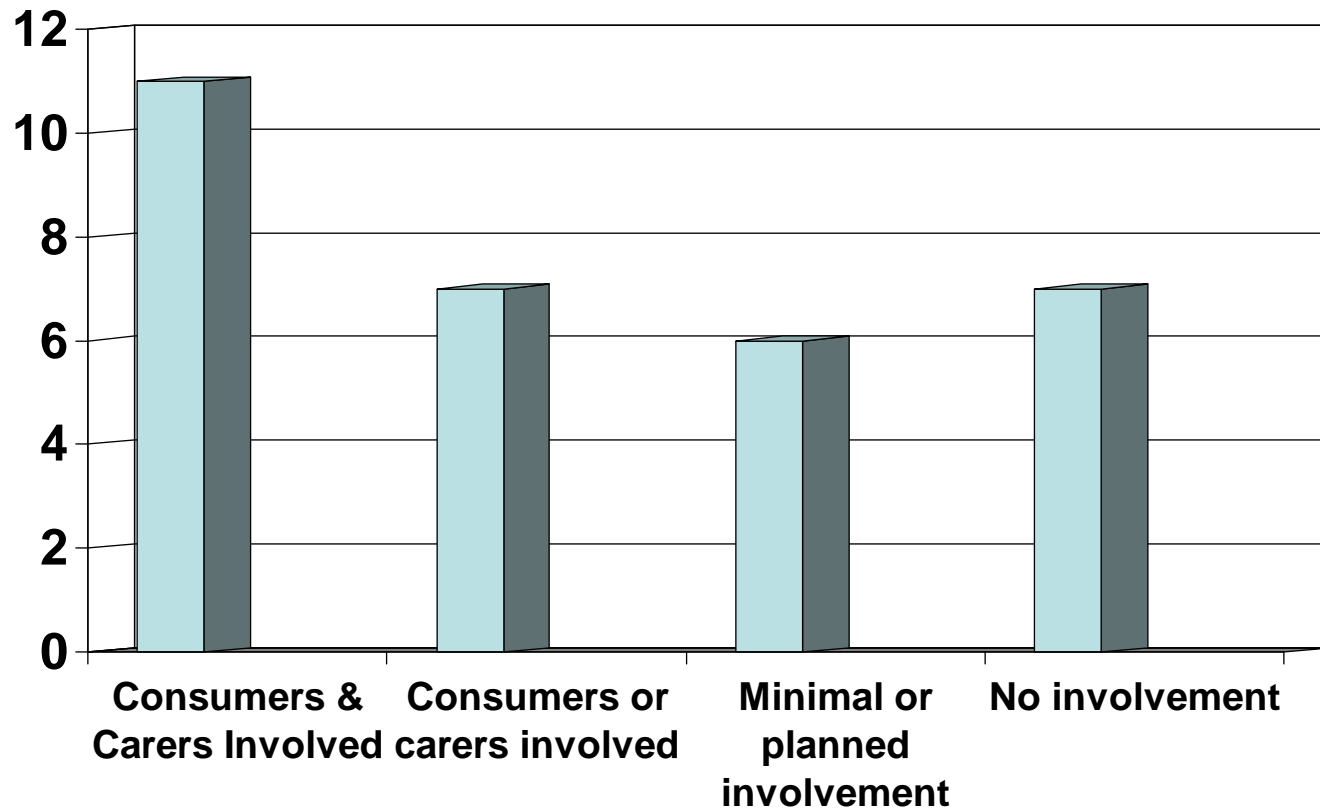
## Compulsory clinical placement hours by number of schools



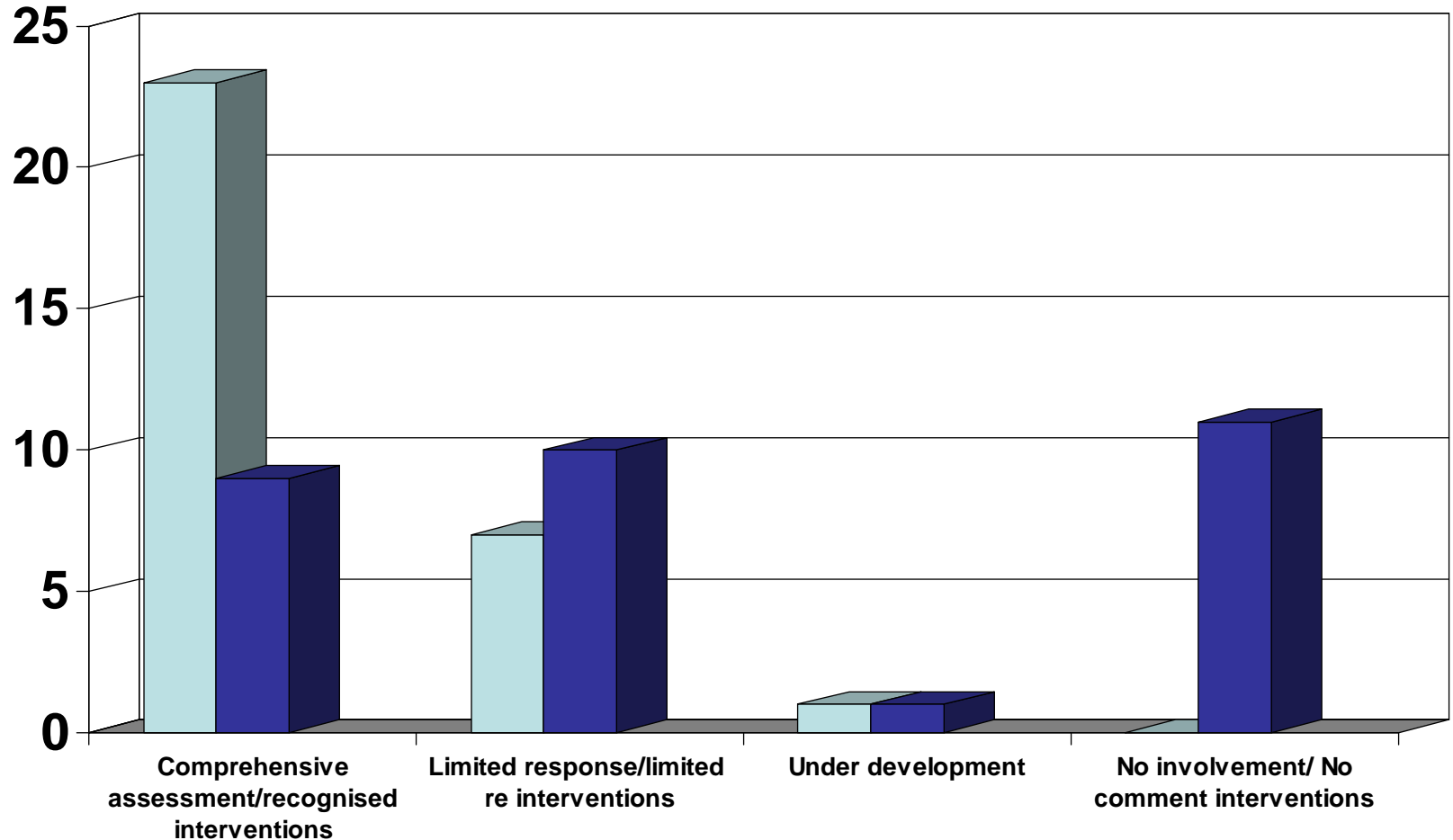


# Consumer and carer involvement

## Consumers and carers delivering content



# Mental health assessment & intervention strategies





# Other developments

- This workshop
- Clearinghouse of learning and teaching resources
- Jurisdictional activities



# Conclusion

- There is still a long way to go!
- Implications of national registration and accreditation
- Need for ongoing collaboration and leadership by government, universities and health services